

Photograph of Sample



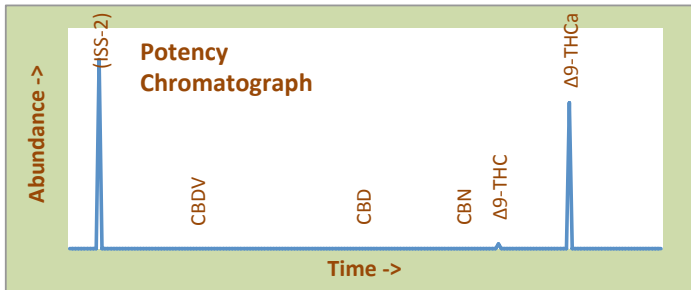
C 5388 Budder Pros

Certificate of Analysis

Assay Date: March 10, 2021 **BioTrack ID:**
Material: Wax 5388 3839 2415 3951
Method: HPLC
Internal ID: BDP 272 *Sample collected by client*
Moisture: Not Performed
α-Tocopherol: Not Performed

Foreign Material Inspection

Inspection not required



Abundant Terpenes

1) a-Pinene	**	11) Terpinolene	**
2) Camphene	**	12) Linalool	**
3) b-Pinene	**	13) Isopulegol	**
4) Myrcene	**	14) Geraniol	**
5) 3-Carene	**	15) b-Caryophyllene	**
6) a-Terpinene	**	16) a-Humulene	**
7) d-Limonene	**	17) Nerolidol	**
8) p-Cymene	**	18) Guaiol	**
9) Ocimene	**	19) a-Bisabolol	**
10) g-Terpinene	**		

Terpene Total (not performed)

Cannabinoid	mg/gram	Method
Δ9-THC	26.2	hplc
Δ9-THCa	774.2	hplc
CBN	0.00	hplc
CBD	<0.1	hplc
CBDa	<0.1	hplc
Total CBG	<0.1	hplc
Δ8-THC	<0.1	hplc
Total	800.5	

Total THC = 70.5%
(Δ9 Activation = 3.7%)

Total CBD <0.1%
CBD Activation >99%

Terpene Profile

(analysis not performed)

*Δ9-THC, Δ9-THCa and Total CBD are reported to BioTrack. 'np' = test not performed



- Δ9-THC
- Δ9-THCa
- CBN
- CBD
- CBDa
- Total CBG
- Δ8-THC

Form Copyright R. Riches 2020

Microbial Screen Observed Rate (cfu/gram)

- Total aerobic plate count:	<1000	Passes
- Total yeast and mold count:	<10	Passes
- Bile-tolerant gram negative:	<10	Passes
- E. Coli:	nd	Passes
- Salmonella spp.:	nd	Passes
- Mycotoxins (B1, B2, G1, G2, OA):	<1 ppb	Passes

Sample Passes Microbial Screen

Limits of Detection (LODs) for all reported analytes can be found at: <http://riograndeanalytics.net/Sensitivity.html>

TerpType®: (profile not performed)

Residual Solvents (ppm), bold-red if failed*

Propane	<10	Heptane	<10
Butanes	<10	EBZ & Xylenes	<10
Pentanes	<10	Methanol	<10
Hexane	<10	2-Propanol	<10
Cyclohexane	<10	Dichloromethane	<10
Benzene	<1	Acetone	<10
Toluene	<10	Ethanol	<10

* Residual limits can be found at: <http://riograndeanalytics.net/Residuals.html>



Approved on March 13, 2021
Results are non-transferable
and valid for 30 days.

Barry Dungan
Barry Dungan - lab manager

