

Photograph of Sample



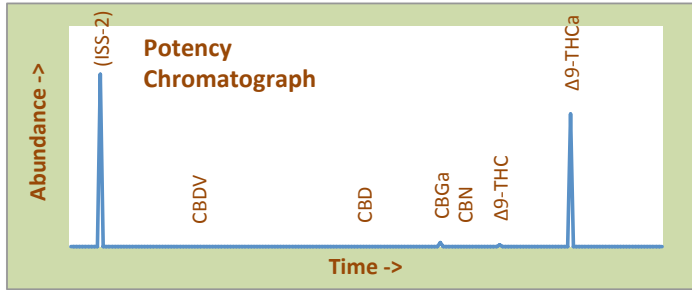
Hydrocarbon Wax Grape Spodie Budder Pros

Certificate of Analysis

Assay Date: March 31, 2021 **BioTrack ID:** 7888 6659 2595 9409
Material: WAX **Method:** HPLC Hydrocarbon Wax (Grape Spodie)
Internal ID: BDP 285 *Sample collected by client*
Moisture: Not Performed
α-Tocopherol: Not Performed

Foreign Material Inspection

Inspection not required



Abundant Terpenes

- | | | | |
|-----------------|----|---------------------|----|
| 1) a-Pinene | ** | 11) Terpinolene | ** |
| 2) Camphene | ** | 12) Linalool | ** |
| 3) b-Pinene | ** | 13) Isopulegol | ** |
| 4) Myrcene | ** | 14) Geraniol | ** |
| 5) 3-Carene | ** | 15) b-Caryophyllene | ** |
| 6) a-Terpinene | ** | 16) a-Humulene | ** |
| 7) d-Limonene | ** | 17) Nerolidol | ** |
| 8) p-Cymene | ** | 18) Guaiol | ** |
| 9) Ocimene | ** | 19) a-Bisabolol | ** |
| 10) g-Terpinene | ** | | |

Terpene Total (not performed)

Cannabinoid	mg/gram	Method
Δ9-THC	10.4	hplc
Δ9-THCa	793.9	hplc
CBN	0.00	hplc
CBD	<0.1	hplc
CBDa	<0.1	hplc
Total CBG	19.3	hplc
Δ8-THC	<0.1	hplc
Total	823.6	

Total THC = 70.7%
(Δ9 Activation = 1.4%)

Total CBD <0.1%
CBD Activation >99%

Terpene Profile

(analysis not performed)

*Δ9-THC, Δ9-THCa and Total CBD are reported to BioTrack. 'np' = test not performed



- Δ9-THC
- Δ9-THCa
- CBN
- CBD
- CBDa
- Total CBG
- Δ8-THC

Form Copyright R. Riches 2020

Microbial Screen (cfu/gram)	Observed Rate
- Total aerobic plate count:	<1000 Passes
- Total yeast and mold count:	<10 Passes
- Bile-tolerant gram negative:	<10 Passes
- E. Coli:	nd Passes
- Salmonella spp.:	nd Passes
- Mycotoxins (B1, B2, G1, G2, OA):	<1 ppb Passes

Sample Passes Microbial Screen

Limits of Detection (LODs) for all reported analytes can be found at: <http://riograndeanalytics.net/Sensitivity.html>

TerpType®: (profile not performed)

Residual Solvents (ppm), bold-red if failed*

Propane	<10	Heptane	<10
Butanes	<10	EBZ & Xylenes	<10
Pentanes	<10	Methanol	<10
Hexane	<10	2-Propanol	<10
Cyclohexane	<10	Dichloromethane	<10
Benzene	<1	Acetone	<10
Toluene	<10	Ethanol	<10

* Residual limits can be found at: <http://riograndeanalytics.net/Residuals.html>



Approved on April 03, 2021
Results are non-transferable
and valid for 30 days.

Barry Dungan
Barry Dungan - lab manager

