

Budder Pros

Sample: 0017.4496

NM 87120
Client Sample ID: 2096
2096

Strain: KOBE

Sample Received: 06/03/2021; Report Created: 06/07/2021

Concentrates & Extracts, Crystalline Solid, Multiple Solvents

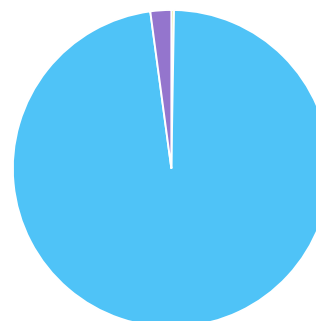


Cannabinoids



Fraction of Measured Cannabinoids

■ CBG ■ THCa ■ Δ9-THC



Cannabinoid	Mass (%)	Mass (mg/g)
CBDa	<0.01	<0.1
CBG	0.25	2.5
CBD	<0.01	<0.1
CBN	<0.01	<0.1
Δ9-THC	1.99	19.9
THCa	91.39	913.9
Total	93.63	936.3

Total THC = THCa * 0.877 + d9-THC
Total CBD = CBDa * 0.877 + CBD

LOQ = Limit of Quantitation; NR = Not Reported because Not Tested; Tested in accordance with Scepter SOP #11. v.2.1 utilizing HPLC

Microbials

Analyte	DOH Limit	Result
	CFU/g	CFU/g
Aerobic Bacteria	100000	<100
Bile-Tolerant Gram-Negative Bacteria	1000	<100
E. Coli	0	Absence
Salmonella	0	Absence
Yeast & Mold	1000	<100

CFU/g = Colony forming units per gram
>Limit = Colony forming units per gram exceeds limits established by NMDOH
Tested in accordance with Scepter SOP #7.0 v.2.1

Mycotoxins

Analyte	DOH Limit	Mass
	PPB	PPB
Aflatoxins		<4.00
Ochratoxin A		<2.00
Total Mycotoxins	20.00	<20.00

Limit of Quantitation; for Aflatoxins = 4.0ppb
Limit of Quantitation; for Ochratoxins = 2.0ppb
Tested in accordance with Scepter SOP #12 v.1.6

Budder Pros

Sample: 0017.4496

NM 87120
Client Sample ID: 2096
2096

Strain: KOBE

Sample Received: 06/03/2021; Report Created: 06/07/2021

Concentrates & Extracts, Crystalline Solid, Multiple Solvents



Residual Solvents

Pass

Analyte	Limit	Mass	Status
	PPM	PPM	
Acetone	2000.00	<LOQ	Pass
Benzene	2.00	<LOQ	Pass
Cyclohexane	1000.00	<LOQ	Pass
Heptane	1000.00	<LOQ	Pass
Isobutane	800.00	<LOQ	Pass
Isopropanol	2000.00	<LOQ	Pass
Methanol	1000.00	<LOQ	Pass
Methylene-Chloride	500.00	<LOQ	Pass
n-Butane	800.00	<LOQ	Pass
n-Hexane	250.00	<LOQ	Pass
Pentane	800.00	<LOQ	Pass
Propane	800.00	<LOQ	Pass
Toluene	800.00	<LOQ	Pass
Xylenes + Ethyl Benzene	2000.00	<LOQ	Pass

LOQ = Limit of Quantitation; Unless otherwise stated all quality control samples performed within specifications established by the Laboratory. Tested in accordance with Scepter SOP #8



Budder Pros

Sample: 0017.4496

NM 87120
Client Sample ID: 2096
2096

Strain: KOBE

Sample Received: 06/03/2021; Report Created: 06/07/2021

Concentrates & Extracts, Crystalline Solid, Multiple Solvents



Laboratory Analysis

Budder Pros
BDP

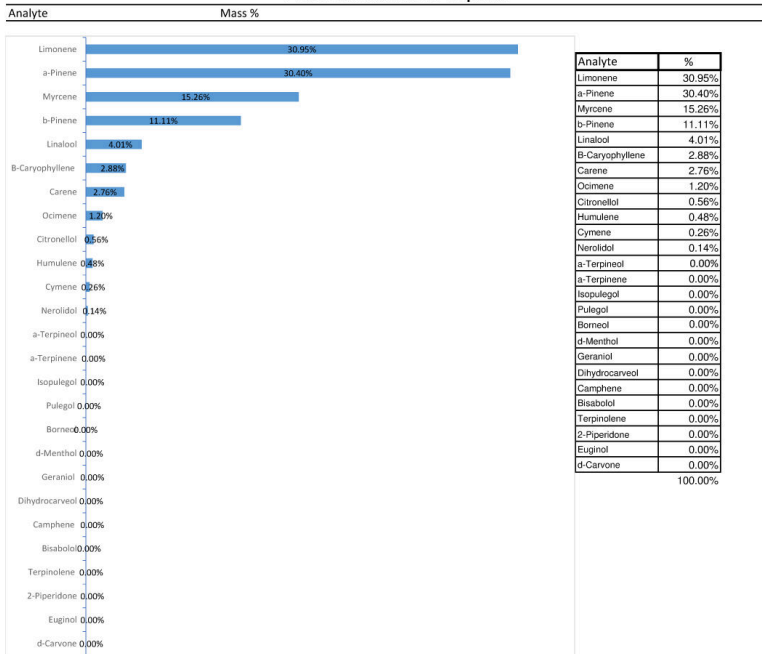
2096

Sample ID: 0017.4496

Received: 6/3/21

Reported: 6/7/21

Percents of Measured Terpenes



2778 Agua Fria Bldg C Suite B
Santa Fe, NM
(505) 216-9484
http://scepterlabs.com
Lic# 1102

Kathleen O'Dea
Kathleen O'Dea
Director

This product has been tested by Scepter Lab using validated testing methodologies. Values reported relate only to the sample tested. Scepter Lab makes no claims as to the efficacy, safety or other risks associated with any detected or non-detected levels of any compounds reported herein. This Certificate shall not be reproduced except in full, without the written approval of Scepter Lab.

