

Budder Pros

Sample: 0035.2404

NM 87120
Client Sample ID: 1052 4823 4605 5199
Holy Grail Kush - 1052

Strain: Holy Grail Kush - 1052
Sample Received: 04/06/2021; Report Created: 04/08/2021

Concentrates & Extracts, Wax



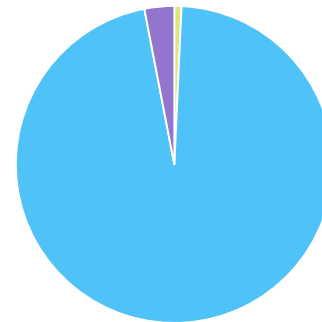
Cannabinoids

73.46%	0.53%
Maximum THC*	Maximum CBD**

Cannabinoid	Mass %	Mass mg/g
THCa	80.86	808.6
Δ9-THC	2.55	25.5
Δ8-THC	NR	NR
THCVa	NR	NR
THCV	NR	NR
CBDa	0.61	6.1
CBD	<0.01	<0.1
CBDVa	NR	NR
CBDV	NR	NR
CBN	<0.01	<0.1
CBGa	NR	NR
CBG	<0.01	<0.1
CBCa	NR	NR
CBC	NR	NR
CBLa	NR	NR
Total	84.02	840.2

Fraction of Measured Cannabinoids

■ CBDa ■ THCa ■ Δ9-THC



Total THC = THCa * 0.877 + Δ9-THC
Total CBD = CBDa * 0.877 + CBD
LOQ = Limit of Quantitation; NR = Not Reported because Not Tested; Tested in accordance with Scepter SOP #11. v.2.1 utilizing HPLC

Microbials

Analyte	DOH Limit CFU/g	Result CFU/g
Aerobic Bacteria	100000	<100
Bile-Tolerant Gram-Negative Bacteria	1000	<100
E. Coli	0	Absence
Salmonella	0	Absence
Yeast & Mold	1000	<100

CFU/g = Colony forming units per gram
>Limit = Colony forming units per gram exceeds limits established by NMDOH
Tested in accordance with Scepter SOP #7.0 v.2.1

Mycotoxins

Analyte	DOH Limit PPB	Mass PPB
Aflatoxins		<4.00
Ochratoxin A		<2.00
Total Mycotoxins	20.00	<20.00

Limit of Quantitation; for Aflatoxins = 4.0ppb
Limit of Quantitation; for Ochratoxins = 2.0ppb
Tested in accordance with Scepter SOP #12 v.1.6



Budder Pros

Sample: 0035.2404

NM 87120
Client Sample ID: 1052 4823 4605 5199
Holy Grail Kush - 1052

Strain: Holy Grail Kush - 1052

Sample Received: 04/06/2021; Report Created: 04/08/2021

Concentrates & Extracts, Wax



Residual Solvents

Pass

Analyte	Limit	Mass	Status
	PPM	PPM	
Acetone	2000.00	<LOQ	Pass
Benzene	2.00	<LOQ	Pass
Cyclohexane	1000.00	<LOQ	Pass
Heptane	1000.00	<LOQ	Pass
Isobutane	800.00	<LOQ	Pass
Isopropanol	2000.00	<LOQ	Pass
Methanol	1000.00	<LOQ	Pass
Methylene-Chloride	500.00	<LOQ	Pass
n-Butane	800.00	<LOQ	Pass
n-Hexane	250.00	<LOQ	Pass
Pentane	800.00	<LOQ	Pass
Propane	800.00	<LOQ	Pass
Toluene	800.00	<LOQ	Pass
Xylenes + Ethyl Benzene	2000.00	<LOQ	Pass

LOQ = Limit of Quantitation; Unless otherwise stated all quality control samples performed within specifications established by the Laboratory. Tested in accordance with Scepter SOP #8

Budder Pros

NM 87120
Client Sample ID: 1052 4823 4605 5199
Holy Grail Kush - 1052

Concentrates & Extracts, Wax

Sample: 0035.2404

Strain: Holy Grail Kush - 1052

Sample Received: 04/06/2021; Report Created: 04/08/2021

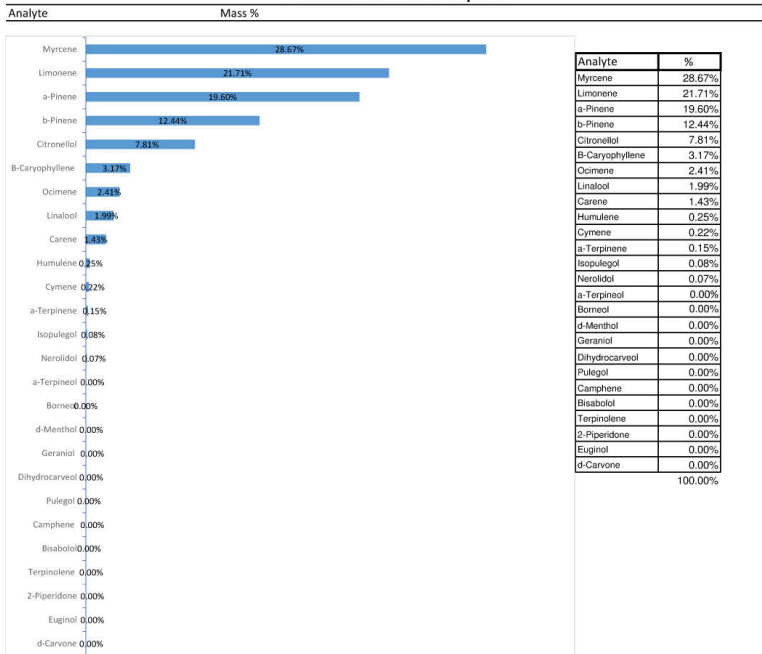


Laboratory Analysis

Budder Pros
BDP
Holy Grail Kush - 1052

Sample ID: 0035.2404
Received: 4/6/21
Reported: 4/8/21

Percents of Measured Terpenes



2778 Agua Fria Bldg C Suite B
Santa Fe, NM
(505) 216-9484
http://scepterlabs.com
Lic# 1102

Kathleen O'Dea
Kathleen O'Dea
Director

This product has been tested by Scepter Lab using validated testing methodologies. Values reported relate only to the sample tested. Scepter Lab makes no claims as to the efficacy, safety or other risks associated with any detected or non-detected levels of any compounds reported herein. This Certificate shall not be reproduced except in full, without the written approval of Scepter Lab.

