

Budder Pros

Sample: 0147.4306

NM 87120
Client Sample ID: 5831137611273363
n5831

Strain: gsc x cake nchem
Sample Received: 05/26/2021; Report Created: 05/28/2021

Concentrates & Extracts, Batter, Multiple Solvents



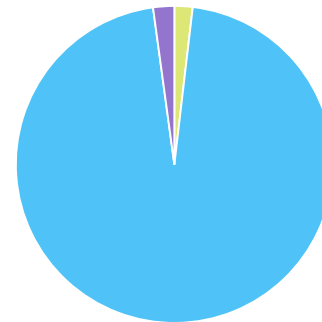
Cannabinoids



Fraction of Measured Cannabinoids

| Cannabinoid | Mass % | Mass mg/g |
|--------------|--------------|--------------|
| CBDa | 1.56 | 15.6 |
| CBG | <0.01 | <0.1 |
| CBD | <0.01 | <0.1 |
| CBN | <0.01 | <0.1 |
| Δ9-THC | 1.81 | 18.1 |
| THCa | 80.70 | 807.0 |
| Total | 84.07 | 840.7 |

■ CBDa ■ THCa ■ Δ9-THC



Total THC = THCa * 0.877 + d9-THC
Total CBD = CBDa * 0.877 + CBD
LOQ = Limit of Quantitation; NR = Not Reported because Not Tested; Tested in accordance with Scepter SOP #11. v.2.1 utilizing HPLC

Microbials

| Analyte | DOH Limit CFU/g | Result CFU/g |
|--------------------------------------|-----------------|--------------|
| Aerobic Bacteria | 100000 | <100 |
| Bile-Tolerant Gram-Negative Bacteria | 1000 | <100 |
| E. Coli | 0 | Absence |
| Salmonella | 0 | Absence |
| Yeast & Mold | 1000 | <100 |

CFU/g = Colony forming units per gram
>Limit = Colony forming units per gram exceeds limits established by NMDOH
Tested in accordance with Scepter SOP #7.0 v.2.1

Mycotoxins

| Analyte | DOH Limit PPB | Mass PPB |
|-------------------------|---------------|------------------|
| Aflatoxins | | <4.00 |
| Ochratoxin A | | <2.00 |
| Total Mycotoxins | 20.00 | <20.00 |

Limit of Quantitation; for Aflatoxins = 4.0ppb
Limit of Quantitation; for Ochratoxins = 2.0ppb
Tested in accordance with Scepter SOP #12 v.1.6



Budder Pros

Sample: 0147.4306

Strain: gsc x cake nchem

NM 87120

Client Sample ID: 5831137611273363

Sample Received: 05/26/2021; Report Created: 05/28/2021

n5831

Concentrates & Extracts, Batter, Multiple Solvents



Residual Solvents

Pass

| Analyte | Limit | Mass | Status |
|-------------------------|---------|------|--------|
| | PPM | PPM | |
| Acetone | 2000.00 | <LOQ | Pass |
| Benzene | 2.00 | <LOQ | Pass |
| Cyclohexane | 1000.00 | <LOQ | Pass |
| Heptane | 1000.00 | <LOQ | Pass |
| Isobutane | 800.00 | <LOQ | Pass |
| Isopropanol | 2000.00 | <LOQ | Pass |
| Methanol | 1000.00 | <LOQ | Pass |
| Methylene-Chloride | 500.00 | <LOQ | Pass |
| n-Butane | 800.00 | <LOQ | Pass |
| n-Hexane | 250.00 | <LOQ | Pass |
| Pentane | 800.00 | <LOQ | Pass |
| Propane | 800.00 | <LOQ | Pass |
| Toluene | 800.00 | <LOQ | Pass |
| Xylenes + Ethyl Benzene | 2000.00 | <LOQ | Pass |

LOQ = Limit of Quantitation; Unless otherwise stated all quality control samples performed within specifications established by the Laboratory. Tested in accordance with Scepter SOP #8



Budder Pros

NM 87120
Client Sample ID: 5831137611273363
n5831

Concentrates & Extracts, Batter, Multiple Solvents

Sample: 0147.4306

Strain: gsc x cake nchem

Sample Received: 05/26/2021; Report Created: 05/28/2021

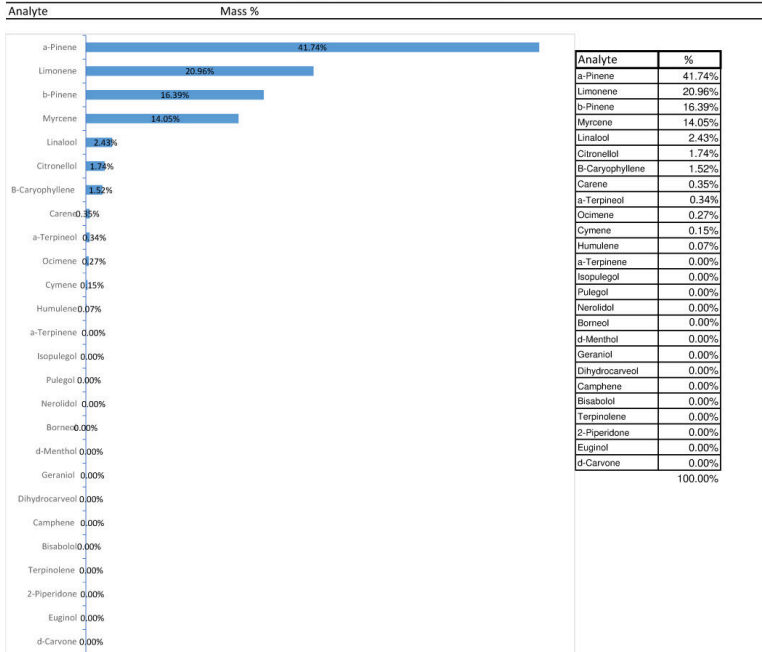


Laboratory Analysis

Budder Pros
BDP
n5831

Sample ID: 0147.4306
Received: 5/25/21
Reported: 5/27/21

Percents of Measured Terpenes



2778 Agua Fria Bldg C Suite B
Santa Fe, NM
(505) 216-9484
http://scepterlabs.com
Lic# 1102

Kathleen O'Dea
Kathleen O'Dea
Director

This product has been tested by Scepter Lab using validated testing methodologies. Values reported relate only to the sample tested. Scepter Lab makes no claims as to the efficacy, safety or other risks associated with any detected or non-detected levels of any compounds reported herein. This Certificate shall not be reproduced except in full, without the written approval of Scepter Lab.

